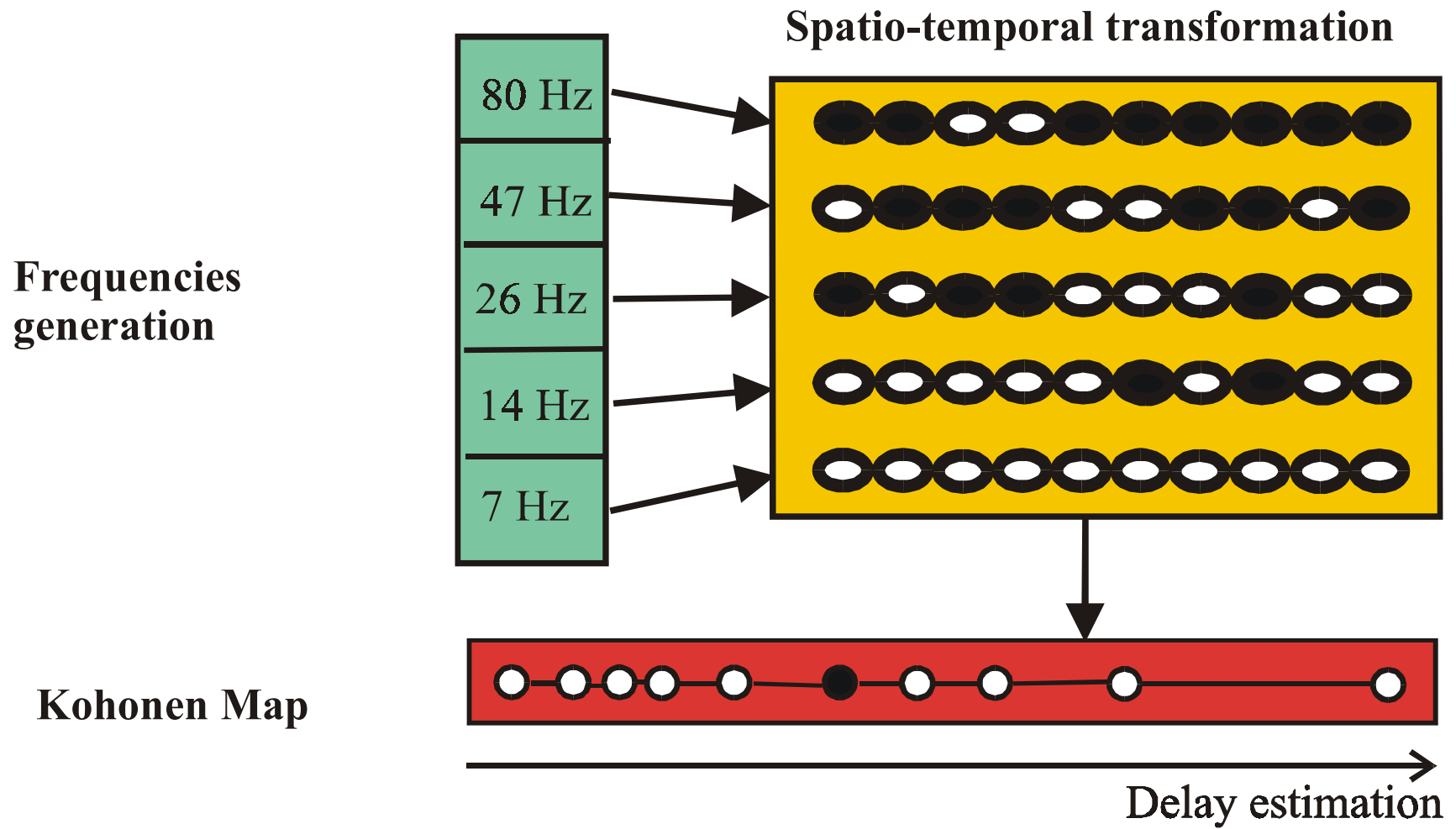


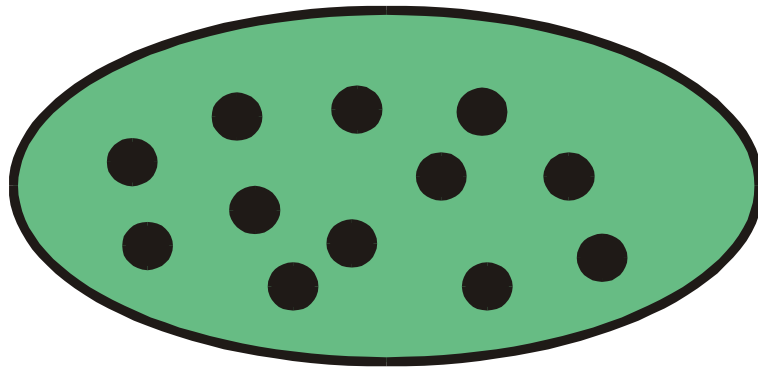
# **Connexionist model for the estimation of short time delays**

**P. DEMOULIN** (Cognitives Sciences Master)

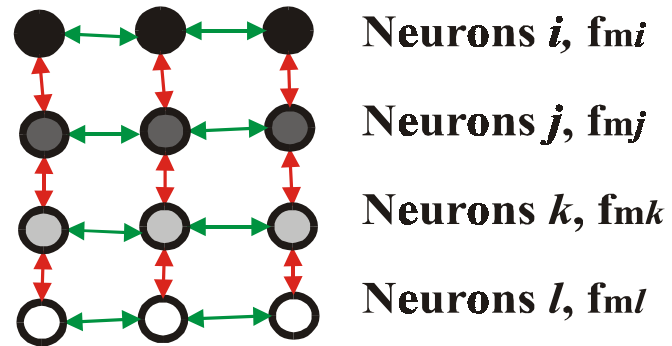
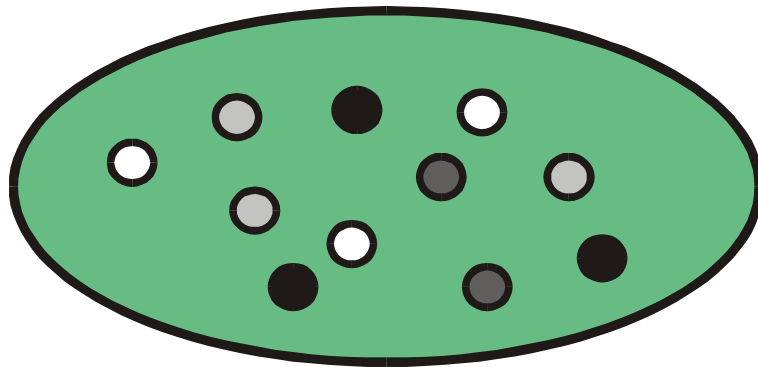
**F. MACAR** (CNRS, Marseille)

**C. TOUZET** (Univ. of Provence)

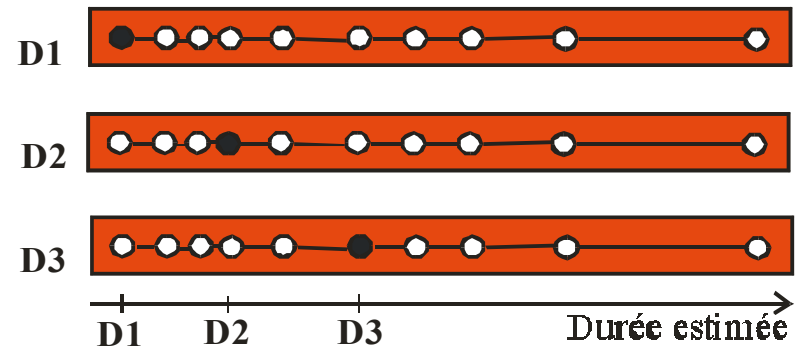
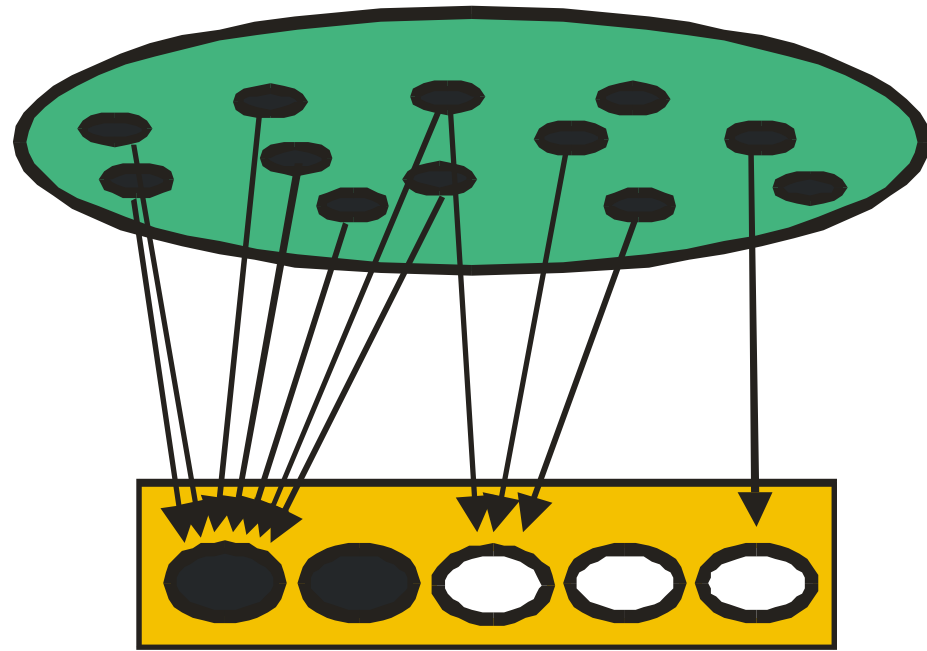




**Intralayer inhibitory connections (%)**  
**Interlayer excitatory connections (1/1)**

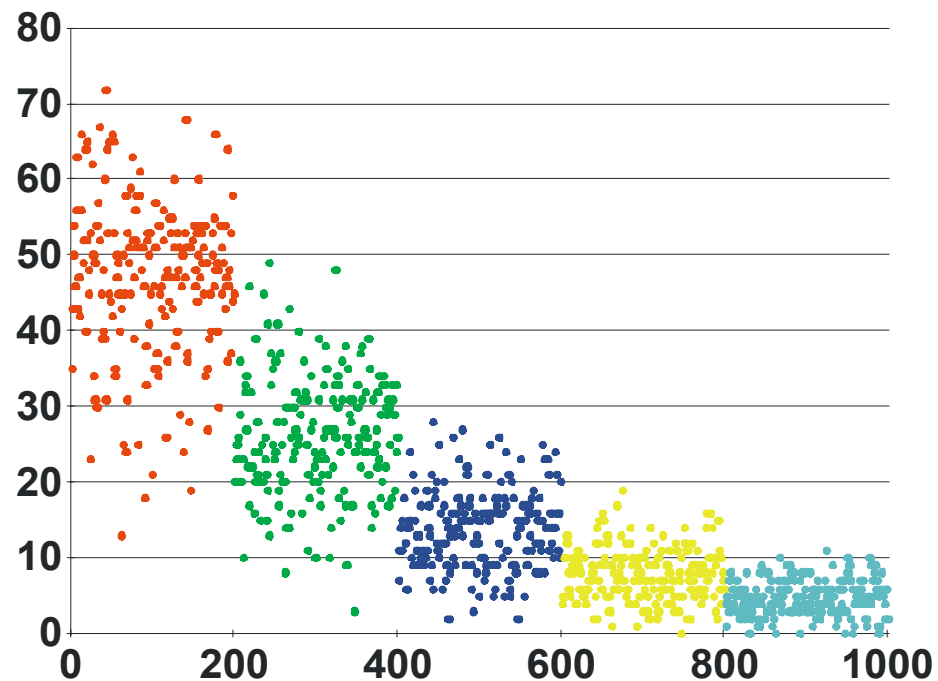


$$f_0 > f_{mi} > f_{mj} > f_{mk} > f_{ml}$$



fo	nbr conx	fm	F
80	5	46,2	46,9
46,2	10	25,3	26
25,3	20	13,3	13,9
13,3	40	6,6	7,9
6,6	80	3,4	4,8

Prévisions Résultats



Fo = 80 Hz, W = 5 mV, 1000 Nr